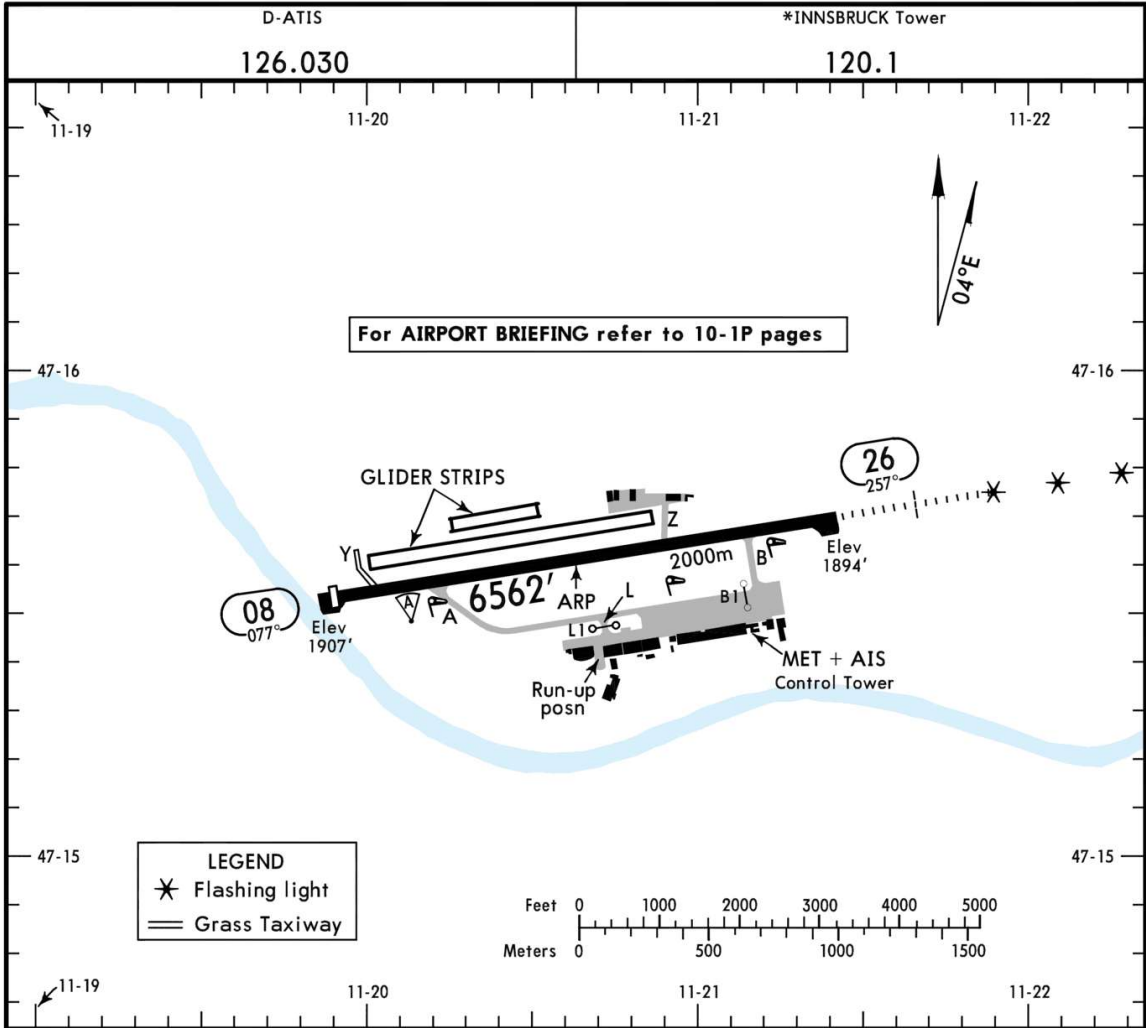


**LOWI/INN**  
 Apt Elev **1907'**  
 N47 15.6 E011 20.6

**JEPPESEN**  
 1 OCT 21 **(10-9)** Eff 7 Oct

**INNSBRUCK, AUSTRIA**  
**INNSBRUCK**



RWY	ADDITIONAL RUNWAY INFORMATION				USABLE LENGTHS		TAKE-OFF	WIDTH
	HIRL (60m)	CL (15m)	TDZ	PAPI (3.5°)	Threshold	Glide Slope		
08	HIRL (60m)	CL (15m)	① TDZ ②	PAPI (3.5°)	RVR	6365' 1940m	⑤	148' 45m
26	HIRL (60m)	CL (15m)	HIALS ③ TDZ ②	SFL REIL ④	RVR	5453' 1662m		

- ① No CL lights on first 197'/60m from begin of RWY until displ thresh. To use full RWY length observe TORA 6562'/2000m sign.
  - ② Simple Touchdown Zone Lights
  - ③ only partly visible between 1969'/600m and 1870'/570m before thresh rwy 26.
  - ④ PAPI-L (3.5°)
  - ⑤ TAKE-OFF RUN AVAILABLE
- |                |                   |               |                |               |               |
|----------------|-------------------|---------------|----------------|---------------|---------------|
| <u>Rwy 08:</u> | from rwy head     | 6562' (2000m) | <u>Rwy 26:</u> | from rwy head | 6365' (1940m) |
|                | twy Y int (grass) | 5925' (1806m) |                | twy B int     | 5256' (1602m) |
|                | twy A int         | 5203' (1586m) |                | twy Z int     | 4206' (1282m) |
|                | twy Z int         | 2201' (671m)  |                |               |               |

Standard		TAKE-OFF
		All Rwys
A	1300' - 1500m ①	
B		
C		
D		

① Special performance departure: RVR 150m, take-off alternate required.

Chart linked to Navigraph account anjan